

SWT/EWT Series

Non-Flammable Edgewound Tubular Wirewound Resistor

Stackpole Electronics, Inc.

Resistive Product Solutions

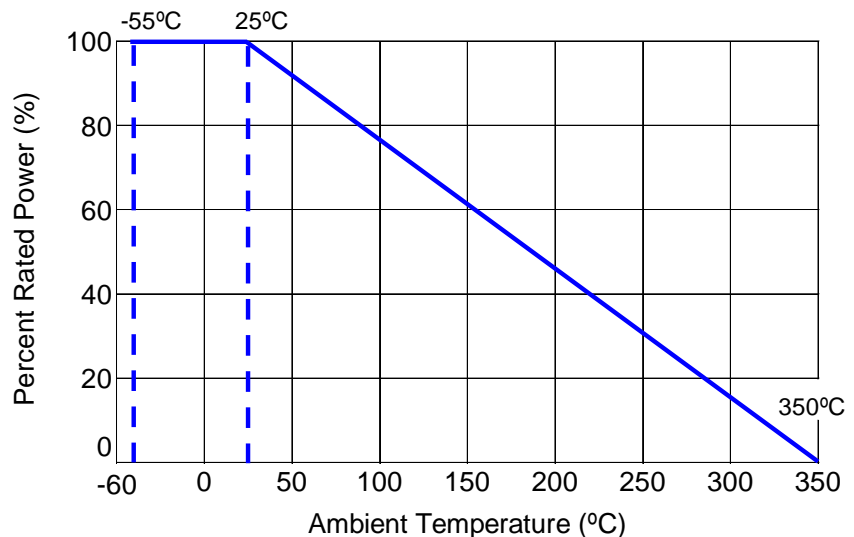
Features:

- High current capability
- RoHS compliant / lead-free
- Non-inductive style only available with silicone coating (NSWT)
- Suitable for soldering or thru bolt connections
- Wirewound ribbon on ceramic substrate
- SWT – Silicone coating provides temperature handling up to 350°C
- SWTA – Adjustable version
- EWT – Vitreous enamel coating provides temperature handling up to 500°C

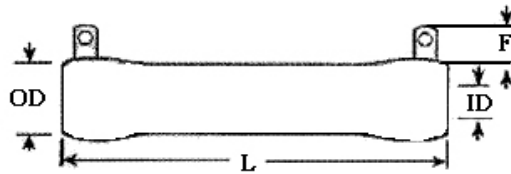


Electrical Specifications					
Type / Code	Power Rating (Watts) @ 25°C	Dielectric Strength VAC	Ohmic Range (Ω) and Tolerance 5%, 10%		
			SWT	NSWT	EWT
SWT25 / EWT25	25W	2,500	0.1 - 30K	0.1 - 100	1 - 10K
SWT50 / EWT50	50W	2,500	0.1 - 50K	0.1 - 275	1 - 20K
SWT100 / EWT100	100W	2,500	0.1 - 100K	0.12 - 680	1 - 50K
SWT150 / EWT150	150W	2,500	0.1 - 150K	0.22 - 1.5K	1 - 80K
SWT175 / EWT175	175W	2,500	0.15 - 100K	0.24 - 1.3K	1 - 100K
SWT200 / EWT200	200W	2,500	0.1 - 200K	0.25 - 1.35K	1 - 120K
SWT225 / EWT225	225W	2,500	0.2 - 130K	0.3 - 1.7K	1 - 130K
SWT250 / EWT250	250W	2,500	0.5 - 125K	0.33 - 1.8K	1 - 200K
SWT300 / EWT300	300W	2,500	0.5 - 150K	0.42 - 2.25K	1 - 240K

Power Derating Curve:



Mechanical Specifications

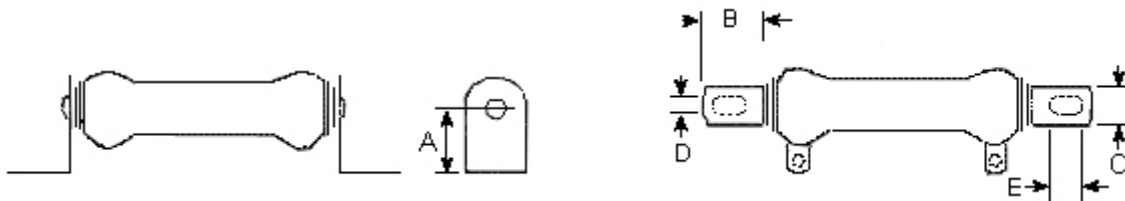


Type / Code(1)	OD	ID	F	L	Unit
SWT25 / EWT25	0.563 ± 0.039	0.313 ± 0.039	0.472 ± 0.039	2.008 ± 0.079	inches
	14.30 ± 1.00	7.94 ± 1.00	12.00 ± 1.00	51.00 ± 2.00	mm
SWT50 / EWT50	0.563 ± 0.039	0.313 ± 0.039	0.748 ± 0.039	4.016 ± 0.079	inches
	14.30 ± 1.00	7.94 ± 1.00	19.00 ± 1.00	102.00 ± 2.00	mm
SWT100 / EWT100	0.752 ± 0.039	0.500 ± 0.039	0.669 ± 0.039	6.496 ± 0.079	inches
	19.10 ± 1.00	12.70 ± 1.00	17.00 ± 1.00	165.00 ± 2.00	mm
SWT150 / EWT150	1.102 ± 0.039	0.752 ± 0.039	0.669 ± 0.039	8.110 ± 0.079	inches
	28.00 ± 1.00	19.10 ± 1.00	17.00 ± 1.00	206.00 ± 2.00	mm
SWT175 / EWT175	1.126 ± 0.039	0.752 ± 0.039	0.669 ± 0.039	8.504 ± 0.079	inches
	28.60 ± 1.00	19.10 ± 1.00	17.00 ± 1.00	216.00 ± 2.00	mm
SWT200 / EWT200	1.378 ± 0.039	0.752 ± 0.039	0.669 ± 0.039	8.740 ± 0.079	inches
	35.00 ± 1.00	19.10 ± 1.00	17.00 ± 1.00	222.00 ± 2.00	mm
SWT225 / EWT225	1.126 ± 0.039	0.752 ± 0.039	0.709 ± 0.039	10.512 ± 0.079	inches
	28.60 ± 1.00	19.10 ± 1.00	18.00 ± 1.00	267.00 ± 2.00	mm
SWT250 / EWT250	1.575 ± 0.039	0.984 ± 0.039	0.787 ± 0.039	8.268 ± 0.079	inches
	40.00 ± 1.00	25.00 ± 1.00	20.00 ± 1.00	210.00 ± 2.00	mm
SWT300 / EWT300	1.575 ± 0.039	0.984 ± 0.039	0.787 ± 0.039	10.236 ± 0.079	inches
	40.00 ± 1.00	25.00 ± 1.00	20.00 ± 1.00	260.00 ± 2.00	mm

(1) EWT and NSWT series will have the same Mechanical Specifications as SWT series

- Hardware:
- Sturdy plated steel brackets, thru-bolts, centering washers, and insulating washers
 - Brackets provide elongated mounting holes for ease of mounting

Mounting Brackets Mechanical Specifications



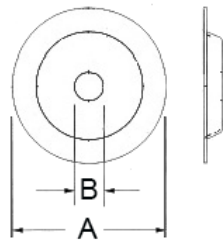
Resistor Power Rating	A	B	C	D	E	Unit
25W	1.000	0.750	0.500	0.219	0.438	inches
	25.40	19.05	12.70	5.56	11.13	mm
50W	1.000	0.750	0.500	0.219	0.438	inches
	25.40	19.05	12.70	5.56	11.13	mm

Mounting Brackets Mechanical Specifications (cont.)

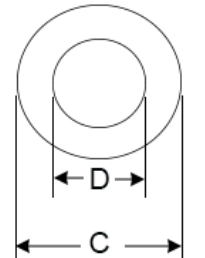
Resistor Power Rating	A	B	C	D	E	Unit
100W	1.000	0.750	0.500	0.219	0.438	inches
	25.40	19.05	12.70	5.56	11.13	mm
150W	1.500	0.875	1.250	0.281	0.563	inches
	38.10	22.23	31.75	7.14	14.30	mm
175W	1.500	0.875	1.250	0.281	0.563	inches
	38.10	22.23	31.75	7.14	14.30	mm
200W	1.500	0.875	1.250	0.281	0.563	inches
	38.10	22.23	31.75	7.14	14.30	mm
225W	1.500	0.875	1.250	0.281	0.563	inches
	38.10	22.23	31.75	7.14	14.30	mm
250W	1.500	0.875	1.250	0.281	0.563	inches
	38.10	22.23	31.75	7.14	14.30	mm
300W	1.500	0.875	1.250	0.281	0.563	inches
	38.10	22.23	31.75	7.14	14.30	mm

Bolt and Washers Mechanical Specifications

Metal Centering Washer

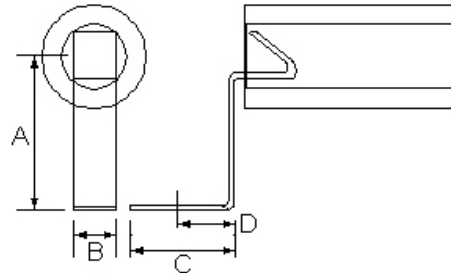


Mica Insulating Washer



Resistor Power Rating	OD	Core Length	Bolt Length	Bolt No.	A	B	C	D	Unit
25W	0.563	2.008	2.500	10	0.560	0.190	0.750	0.313	inches
	14.30	51.00	63.50		14.22	4.83	19.05	7.95	mm
50W	0.563	4.016	4.750	10	0.560	0.190	0.750	0.313	inches
	14.30	102.00	120.65		14.22	4.83	19.05	7.95	mm
100W	0.752	6.496	7.000	10	0.750	0.190	1.000	0.500	inches
	19.10	165.00	177.80		19.05	4.83	25.40	12.70	mm
150W	1.102	8.110	7.750	0.25"	1.125	0.250	1.250	0.625	inches
	28.00	206.00	196.85		28.58	6.35	31.75	15.88	mm
175W	1.126	8.504	9.125	0.25"	1.125	0.250	1.500	0.750	inches
	28.60	216.00	231.78		28.58	6.35	38.10	19.05	mm
200W	1.378	8.740	9.250	0.25"	1.400	0.250	1.500	0.750	inches
	35.00	222.00	234.95		35.56	6.35	38.10	19.05	mm
225W	1.126	10.512	11.250	0.25"	1.125	0.250	1.500	0.750	inches
	28.60	267.00	285.75		28.58	6.35	38.10	19.05	mm
250W	1.575	8.740	9.250	0.5"	1.570	0.500	2.000	1.000	inches
	40.00	222.00	234.95		39.88	12.70	50.80	25.40	mm
300W	1.575	10.709	11.125	0.5"	1.570	0.500	2.000	1.000	inches
	40.00	272.00	282.58		39.88	12.70	50.80	25.40	mm

Spring Clip Mechanical Specifications



Resistor Power Rating	A	B	C	D	Unit
25W	0.625	0.250	0.469	0.313	inches
	15.88	6.35	11.91	7.95	mm
50W	0.625	0.250	0.469	0.313	inches
	15.88	6.35	11.91	7.95	mm

RoHS Compliance

Stackpole Electronics has joined the worldwide effort to reduce the amount of lead in electronic components and to meet the various regulatory requirements now prevalent, such as the European Union’s directive regarding “Restrictions on Hazardous Substances” (RoHS 2). As part of this ongoing program, we periodically update this document with the status regarding the availability of our compliant components. All our standard part numbers are compliant to EU Directive 2011/65/EU of the European Parliament.

RoHS Compliance Status

Standard Product Series	Description	Package / Termination Type	Standard Series RoHS Compliant	Lead-Free Termination Composition	Lead-Free Mfg. Effective Date (Std Product Series)	Lead-Free Effective Date Code (YY/WW)
SWT	Non-Flammable Edgewound Tubular Wirewound Silicone Coating Resistor	Special	YES	100% Matte Sn	Always	Always
EWT	Non-Flammable Edgewound Tubular Wirewound Vitreous Enamel Coating Resistor	Special	YES	100% Matte Sn	Always	Always

“Conflict Metals” Commitment

We at Stackpole Electronics, Inc. are joined with our industry in opposing the use of metals mined in the “conflict region” of the Eastern Democratic Republic of the Congo (DRC) in our products. Recognizing that the supply chain for metals used in the electronics industry is very complex, we work closely with our own suppliers to verify to the extent possible that the materials and products we supply do not contain metals sourced from this conflict region. As such, we are in compliance with the requirements of Dodd-Frank Act regarding Conflict Minerals.

Compliance to “REACH”

We certify that all passive components supplied by Stackpole Electronics, Inc. are SVHC (Substances of Very High Concern) free and compliant with the requirements of EU Directive 1907/2006/EC, “The Registration, Evaluation, Authorization and Restriction of Chemicals”, otherwise referred to as REACH. Contact us for complete list of REACH Substance Candidate List.

Environmental Policy

It is the policy of Stackpole Electronics, Inc. (SEI) to protect the environment in all localities in which we operate. We continually strive to improve our effect on the environment. We observe all applicable laws and regulations regarding the protection of our environment and all requests related to the environment to which we have agreed. We are committed to the prevention of all forms of pollution.

How to Order

1	2	3	4	5	6	7	8	9	10	11	12
E	W	T	M	5	0	J	B	2	0	0	R

Product Series		Code	Description	Code	Power	Tolerance		Packaging				Resistance Value
SWT	Silicone Coating (std)	-	Std Tab Connection	25	25W	Code	Tol	Code	Description	Size	Quantity	Four characters with the multiplier used as the decimal holder. 0.1 ohm = R100 1 ohm = 1R00 10 Kohm = 10K0
EWT	Vitreous Enamel	M	Mounting Hardware	50	50W	J	5%	B	Bulk	All Sizes	Each	
NSWT	Non-inductive Silicone Coating	S	Spring Clips	100	100W	K	10%					
		L	Welded Straight Leads	150	150W							
		A	Adjustable	175	175W							
				200	200W							
				225	225W							
				250	250W							
				300	300W							